



"built on integrity
driven by quality"



TRISPEC

11520 W 21ST ST. UNIT 3, GREELEY, CO 80634 | 888-874-9742 | WWW.TRISPECSERVICES.COM

CODE COMPLIANCE INFORMATION



TRISPEC trains and certifies its technicians with the most up-to-date codes to ensure your NDT projects meet every requirement and specification; this includes all documentation written and practiced by the company and its employees.

We strictly adhere to AWS, API, ASME, ABS, and NACE codes, guidelines, recommendations, and specifications.

Examples of codes we work within:

ASME B31.1 - Power Piping

ASME B31.3 - Process Piping

ASME B31.4 - Pipeline Transportation for Liquids & Slurries

ASME B31.5 - Refrig. Piping & Heat Transfer Components

ASME B31.8 - Gas Transmission and Distribution Piping

ASME B31.9 - Building Services Piping

ASME B31.12 - Hydrogen Piping and Pipelines

AWS D1.1 - Steel Structural Welding

AWS D1.5 - Bridge Welding

AWS D1.6 - Stainless Steel Structural Welding

ASME Section V

ASME Section VIII

ASME Section IX

API 510 - Pressure Vessel Inspection/Rating/Repair/Alteration

API 570 - In-service Inspection/Repair/Alteration of Piping

API 598 - Valve Inspection & Testing

API 620 - Low-Pressure Storage Tank Design/Construction

API 650 - Welded Tanks for Oil Storage

API 653 - Tank Inspection/Repair/Alteration/Reconstruction

API 1104 - Welding of Pipelines & Related Facilities


API 1169 - Pipeline Construction Inspection

API 2000 - Venting Atmospheric/Low-pressure Storage Tanks

STI SP001 - Steel Tank Institute Aboveground Storage Tanks

+ many other industry codes

 COLORADO - TEXAS - LOUISIANA - WYOMING

 888-874-9742

 TRISPECSERVICES.COM



TRISPEC
built on integrity, driven by quality



ABOUT THE COMPANY

TRISPEC, LLC is a veteran-owned non-destructive testing company based out of Greeley, CO specializing in Ultrasonics and Mechanical Integrity. Phased Array (PAUT), Shear Wave (UTSW), Certified Welding Inspection (CWI), various API, AWS, and AWWA services, Corrosion Mapping, Magnetic Particle Testing (MT), Dye Penetration Testing (PT), Ultrasonic Thickness Testing (UTT) are a few of the services we currently offer.

Built on integrity and driven by quality; TRISPEC aims to provide top-tier service and productivity to our customers throughout the United States. Our goal is to set the standard for reliability by creating a culture that empowers its employees. We cover many different industries including oil & gas, energy, power, nuclear, aerospace, and fabrication, among others.



Owners' Commitment to Quality:

Quality is an integral part of TRISPEC's corporate business principles. These principles guide our actions to deliver services that are safe, compliant and preferred. They are essential for the achievement of our ambition to be recognized and trusted to offer services that enhance the quality of inspection and contribute to a safer future. At TRISPEC, our commitment is to never compromise on the safety, compliance and quality of our services. This requires everybody to be engaged, to understand their responsibility, and to be empowered to take action in order to protect individuals and families, our customers and our brands.

Our quality policy summarizes the essential elements of our commitment for excellence and includes:

- Fostering a quality mind-set with the objective of developing and providing services with zero compromises that are trusted and preferred by individuals and companies and deliver on our promise to enable safer and efficient work.
- Complying with relevant laws and regulations as well as internal requirements.
- Continuously challenging ourselves to improve the quality management system to guarantee site safety, prevent quality incidents, and eliminate defects through the review of quality objectives and results.
- Encouraging participation and promotion of quality responsibilities amongst all employees and third parties through standards, education, training and coaching, supervision and effective communication.

At TRISPEC, teamwork, engagement, ownership and support by everyone are vital for achieving our quality objectives. In this context, we are committed to providing the required leadership, management, and resources and we will ensure that the Quality Policy is reviewed annually and communicated to employees and third parties. At its core, Quality is first and foremost about trust in our employees, our services, and in our brands. But quality is also more than this. It is about delivering what we promise in everything we do. Each one of us has the power to influence quality and trust through our leadership, dedication and passion.

 COLORADO - TEXAS - LOUISIANA - WYOMING

 888-874-9742

 TRISPECSERVICES.COM



TRISPEC
built on integrity, driven by quality



PHASED ARRAY ULTRASONICS

- Instant, accurate results
- Minimizes inspection time
- Determine depths of indications
- Detects surface and sub-surface
- All-digital data & reports
- Code-compliant inspection
- Encoded data

ADVANTAGES OVER RADIOGRAPHY (X-RAY)

- Environmentally-friendly inspection
- Immediate, real-time results (no development required)
- No radiation source; eliminates boundaries and safety hazards
- Precise locating and sizing of indications, including: width, length, depth, and overall size



THICK MATERIAL

Ideal for thicker materials due to the penetrating power of PAUT. Eliminates the need for dangerous cobalt sources.



VESSEL SEAMS

Simplifies long & round vessel seams when surrounding production can't stop and internal access is unavailable.



SMALL BORE PIPE

Perfect for piping 4" and under, regardless of schedule or bevel. Capable of both single side & dual side access.



BIG BORE PIPE

Great for piping 6" and greater; i.e. pipeline and power projects, as well as fab. and field welds. Equipment capabilities include TOFD, TFM, and FMC.



COLORADO - TEXAS - LOUISIANA - WYOMING



888-874-9742



TRISPECSERVICES.COM



TRISPEC

built on integrity, driven by quality



INTERNAL CORROSION MAPPING



- Elbow scans
- Longitudinal scans
- Circumferential scans
- 2" OD up to flat plate
- High-resolution data
- Environmentally safe
- Real-time results

OVERVIEW:

Internal Corrosion Mapping (ICM) detects degradation of metallic structures which can have a variety of causal factors and can display itself in many different ways. Corrosion inspection procedures evaluate the remaining wall thickness or the presence of mid-wall anomalies in pipework, pressure vessels or any metallic structure.

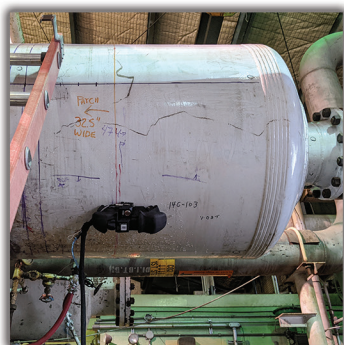
TECHNOLOGY:

A multi-element probe responsible for capturing all data within the scan zone. Utilizes a built-in water channel for proper coupling. A built-in encoder wheel tracks the FlexoFORM in 1 mm increments to ensure proper coverage of the scanning area with fully-encoded data. TRISPEC has the ability to hot-swap a variety of wedges in the field to accommodate most sizes of piping, tanks, vessels, etc.



BIG-BORE PIPE + ELBOWS

By utilizing ultrasonics, ICM works on any material type and schedule. From small-bore pipes to big-bore elbows, any asset can be inspected.



SEPARATORS + VESSELS

When entry for inspection is not permitted, scanning from the OD with the compact probe can provide up to 100% coverage of an area's ID & OD.



TANKS + SILOS

Perfect for mapping interior shell and head corrosion by safely scanning longitudinally or circumferentially while the unit remains in-service.



SMALL-BORE PIPE

Specialized PAUT probes and encoders allow for piping scans down to 2" in diameter, regardless of material type or schedule.



COLORADO - TEXAS - LOUISIANA - WYOMING



888-874-9742



TRISPECSERVICES.COM



TRISPEC

built on integrity, driven by quality



CORROSION UNDER INSULATION

- Fast data acquisition
- Real-time imaging for instant results
- Eliminate jacketing and insulation removal
- Intrinsically-safe equipment

OVERVIEW:

A method which maps material thickness using ultrasonics or eddy current. Thickness variations due to internal or external corrosion under insulation can be identified and graphically portrayed. Our CUI services have the ability to scan through thick insulation, as well as aluminum and stainless weather jackets.

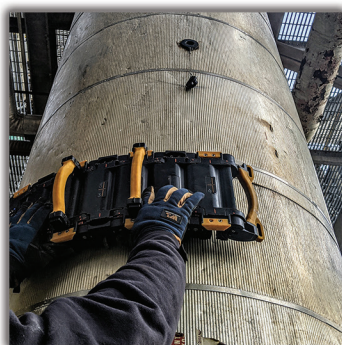
TECHNOLOGY:

- PEC-Array probe
 - 6" To flat diameter specimen
 - 0.25"-1.0" Thick material 0-4" thick insulation+jacketing
- Single-element probe
 - Up to 4" thick material and 12" thick insulation
- Tank floor probe
 - 0.2" Thick blade, up-to 16" reach under tank bottoms



PIPE + VESSELS + TANKS

Works on a variety of material and insulation combinations. Custom probes are available for more specialized projects.



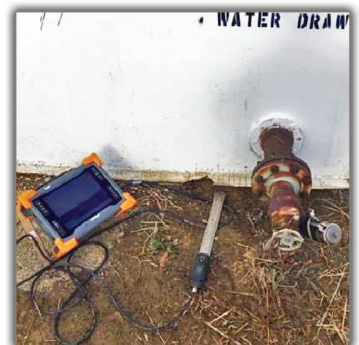
PEC-ARRAY

With 6x built-in channels, this probe is perfect for piping 6" or greater, vertical or horizontal vessels, and tank shells.



PEC SINGLE-ELEMENT

For optimal penetrating power, the single-element probes can be utilized on any application providing the highest data resolution possible.



PEC TANK FLOOR

Allows for the inspection of a tanks critical zone corrosion externally. No need to empty or shut down a tank for entry.

📍 COLORADO - TEXAS - LOUISIANA - WYOMING

☎ 888-874-9742

🌐 TRISPECSERVICES.COM



TRISPEC
built on integrity, driven by quality



MECHANICAL INTEGRITY GROUP

Providing turnkey services on many routine and specialty projects covering a variety of industries such as Refineries, Chemical Plants, Nuclear Facilities, Down Mid & Up-Stream, Power Generation, and Aerospace.

On-Stream, Emergency Shut Down, Fitness for Service, and Turnkey Initial PSM Inspections are a few of the in-service and out-of-service solutions covered.



OVERVIEW:

- API (American Petroleum Institute)
- AWS (American Welding Society)
- AWWA (American Water Works Association)
- STI (Steel Tank Institute)
- NACE/AMPP (Assoc. Materials Protection & Performance)
- ASNT (American Society for Nondestructive Testing)
- ASME (American Society of Mechanical Engineers)

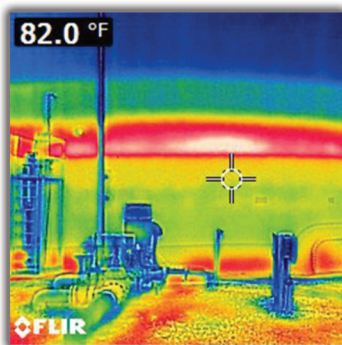
ADDITIONAL CAPABILITIES:

Ability to integrate into existing Mechanical Integrity programs with data entry, inspections, and isometric/P&ID drawing reviews and redlining.



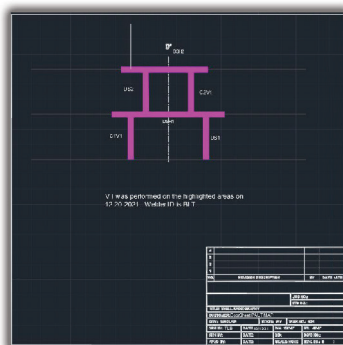
API

Certified Inspections on tanks, vessels, and process piping to determine fitness for continued service and compliance, including RBI assessments.



FITNESS FOR SERVICE

Evaluations including, but not limited to, weather or fire damage assessment, general metal loss, and dent/gouging.



CWI

Oversight of entire welding processes and programs including welder qualifications, in-process VT, ISO tracking, and final package turnover.



NDT

Support for any MI project with in-house qualified NDT personnel, ranging from conventional methods to advanced ultrasonics.



COLORADO - TEXAS - LOUISIANA - WYOMING



888-874-9742



TRISPECSERVICES.COM



TRISPEC

built on integrity, driven by quality



CONSTRUCTION INSPECTION & TESTING

TRISPEC offers a range of testing and inspection services related to structural steel pre-fabrication, and field erection.

CONSTRUCTION CAPABILITIES

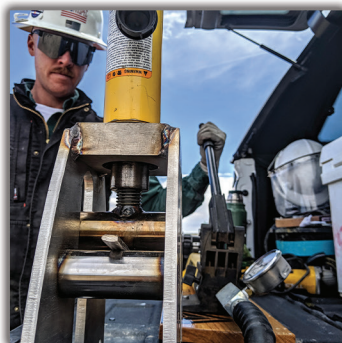
TRISPEC is certified through AWS, NACE/AMPP and ASNT to perform certified weld inspection, coating and fireproofing assessment, bolting inspection and perform all pre-job checklist items such as review of drawings and plans, or verifying all welders are properly certified and their testing is current.

We can also perform any non-destructive testing (NDT) required for your project. Methods include magnetic particle, dye penetrate, UT Shear Wave and more advanced methods such as Phased Array Ultrasonics if required. Because TRISPEC focuses on the welding and joining of structural steel, we are well positioned to provide cost effective, high quality welding and joining inspections safely.



AWS CWI

Review welding procedures and certs, examine drawings and plans, inspect pre-welded conditions, oversee welding and non-destructive testing.



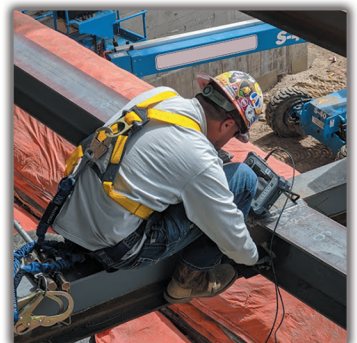
PRE-JOB CERTIFICATIONS

Testing of welders via various destructive or non-destructive means, and verifying qualifications are a few of the pre-job tasks available.



BOLTING INSPECTION


Examine structural drawings and plans, confirm proper materials, pre-installation examination, and post-installation examination.



NDT INSPECTION

Shear Wave and Phased Array testing of partial and full-pen. welds; magnetic particle and dye penetrant examination are available.

 COLORADO - TEXAS - LOUISIANA - WYOMING

 888-874-9742

 TRISPECSERVICES.COM



TRISPEC
built on integrity, driven by quality



MAGNETIC PARTICLE & DYE PENETRANT TESTING

DYE PENETRANT:

Dye Penetrant Testing is a method that utilizes colored dye to reveal surface flaws on parts which may not be visible. The technique works via "capillary action," a process where a liquid flows into a narrow space without help from gravity. PT is one of the most commonly used inspection techniques in many industries because it is one of the easiest and least expensive NDT techniques to perform.

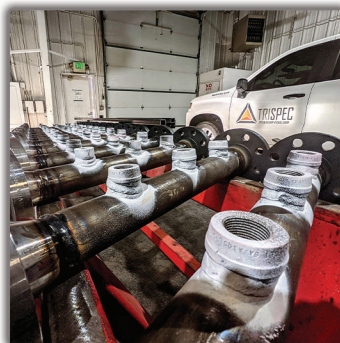
MAGNETIC PARTICLE:

Magnetic Particle Testing is used to detect surface and slightly subsurface flaws in most ferromagnetic materials such as iron, nickel, cobalt, etc. Because it does not necessitate the degree of surface preparation required by other nondestructive test methods, conducting MT is relatively fast and easy. This has made it one of the more commonly utilized NDT techniques. MT can be applied in both visible and florescent applications.



EFFICIENT + VERSATILE

Magnetic Particle testing can be performed by an individual with minimal equipment in outdoor or dark conditions.



HIGH-VOLUME

MT testing is a great solution for high-volume projects that require NDT to locate defects on welds or base material.



NON-FERROUS

Dye Penetrant is perfect for testing non-ferrous metals such as 304 stainless steel or any surface discontinuities not visible to the naked eye.



MASS-SURFACE

Larger, connected surfaces benefit from the penetrant's ability to coat a greater sized area all at once.

 COLORADO - TEXAS - LOUISIANA - WYOMING

 888-874-9742

 TRISPECSERVICES.COM




TRISPEC
built on integrity, driven by quality





 COLORADO - TEXAS - LOUISIANA - WYOMING

 888-874-9742

 TRISPECSERVICES.COM



TRISPEC

built on integrity, driven by quality

